



# Weatherite

AIR CONDITIONING LIMITED

  
**WispAir**®  
AIR HANDLING UNITS

## Air Handling Units



 **BRITISH MANUFACTURER**  
FOR OVER 45 YEARS

 **MADE IN  
BRITAIN**

An extensive range of advanced,  
energy efficient, quality Air Handling Units

# Weatherite Air Conditioning Ltd - About us

One of the UK's leading manufacturers of made-to-measure HVAC equipment.



Weatherite Air Conditioning Ltd has established itself as one of the UK leaders in the design and manufacture of innovative, energy efficient, high quality HVAC equipment- for all sectors of industry.

Rather than supplying an 'off-the-shelf' product, which may or may not provide the right solution, we design and build systems - to meet the clients exact requirements.

This expertise, gained over the last 45 years, means we can deliver highly advanced, innovative, energy efficient air handling solutions – built to meet each individual installation.

Energy efficiency and the reduction of carbon emissions are high on almost every company's agenda these days and we continually look at ways of reducing energy usage- whilst also looking at ways of helping reduce harmful greenhouse gas emissions.

# WispAir AHUs- Delivering exceptional efficiency

For over 45 years, Weatherite Air Conditioning Ltd has been designing and manufacturing HVAC solutions for all sectors of industry.

Using specially developed selection and quotation software, integrated with a purpose designed interface programme which seamlessly links design, purchasing and manufacturing processes, our new WispAir range combines rapid quotation turnaround and fast-trach delivery of fully compliant, quality AHUs.

## Innovation- as standard

Our philosophy has always been to deliver quality, innovative HVAC systems that provide long lasting, energy efficient, highly reliable capabilities. Our comprehensive R&D activities ensure we are aware of new developments within our industry and we are always one of the first companies to adopt and drive innovation.

Our new WispAir range of AHUs incorporates the very latest technology, delivering exceptional performance, reliability and energy efficiency. Utilising high efficiency fans and motors together with state of the art heat recovery devices and heat exchangers, the WispAir range delivers a range of exceptionally quiet, compact, cost effective solution for small, medium and large applications.

## Quality

All our AHUs are designed and manufactured to the highest standards within our own 160,000sq ft production plant, in the heart of the West Midlands, where they are fully inspected prior to delivery. Weatherite has built its reputation, on supplying quality HVAC solutions and our WispAir range of AHUs is no exception.

## Software driven

Our unique selection software has the built-in ability to meet the specification differences for each sector including:- Healthcare, Commercial, Retail, Pharmaceutical, Education, Leisure, Hospitality, Entertainment, Hotel, Data Centres, Public Buildings.

## Regulatory compliance

All our WispAir AHUs are designed and manufactured in compliance with all relevant legislation including ISO/BS/EN, HTM 03, standards and ErP Ecodesign directives.



# An extensive range to suit any application

## The Range

WispAir offers a wide range of AHU configurations, designed and manufactured to deliver energy efficiency, reliability and longevity as standard. All our AHUs incorporate the latest construction techniques, componentry and control technologies - aimed at optimising system performance.

Our general WispAir range covers air flows from 0.3m<sup>3</sup>/s to 35m<sup>3</sup>/s however, as a bespoke manufacturer, we can design and build larger units - to suit each individual application.

Using the very latest selection and quoting software, which seamlessly links to our estimating, design, procurement and manufacturing interfaces, we can provide a speedy turnaround from initial enquiry through to delivery of equipment.



# Designed to deliver exceptional performance

## Components/Options

We provide a comprehensive range of solutions, all including a range of high efficiency components:-

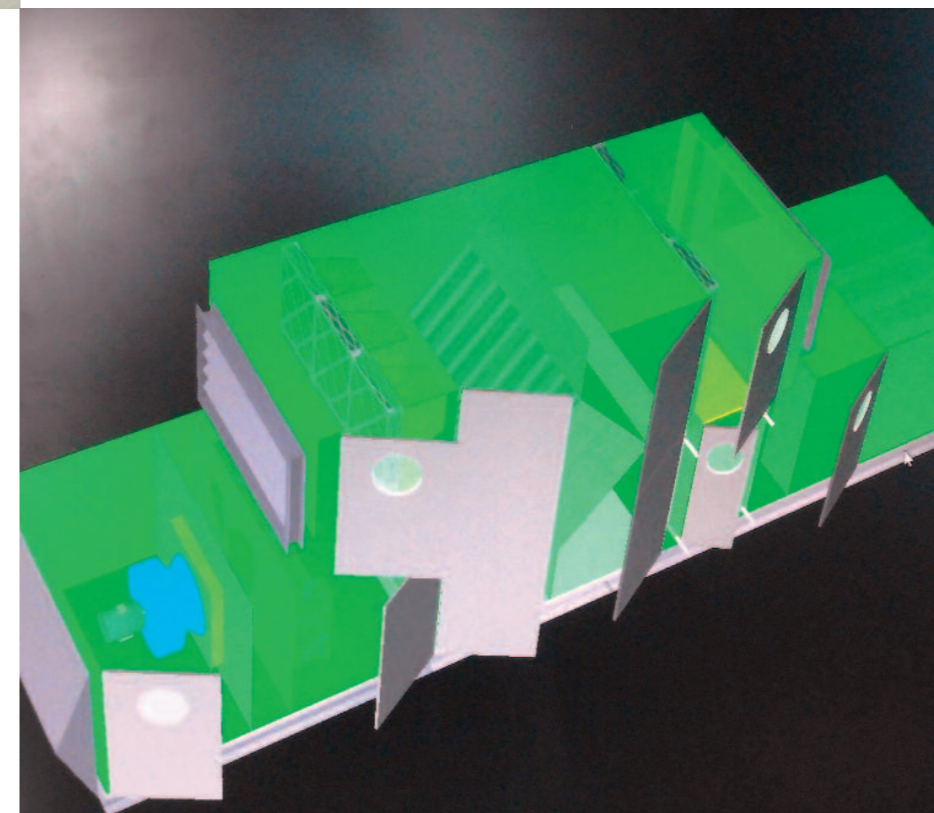
- High performance fans including plug, belt and direct drive with variants on impeller type to suit each specific application.
- A wide range of filters - providing the right solution for each application.
- Optional intelligent integrated control technology-ensuring energy efficient operation - 24/7.
- A comprehensive range of heating options including gas, water, electric and heat pump.
- Heat recovery solutions including, mixing boxes, thermal wheel, plate heat exchanger and run-around configurations.
- Cooling options include chilled water, direct expansion and adiabatic.
- Fan motors: EC, IE2, IE3 and IE4 options.
- Motor speed control via EC or inverter motors as standard.
- Special applications including a variety of humidifiers and desiccant wheels.

## Features/Benefits

- Comprehensive range of configurations
- Customer defined- shape, size, configuration and performance built into each individual solution
- A range of supply, extract and heat recovery permutations
- Extensive range of operating duties
- Exceptional acoustic and vibration control
- Robust cold bridge-free construction
- Quiet operation
- Independently tested to and compliant with BS EN1886:2007
- Fully ErP compliant
- Also available as a flat-pack solution
- UK designed and manufactured

## Flexibility

- Our WispAir units are constructed using our tried and tested, double skinned, fully insulated casework technology - providing a cold bridge - free solution as standard.
- Our units have been independently tested in accordance with BS EN1886:2007, mechanical performance standards and fully comply.
- Multiple airflow and unit configuration options.
- Component selections and control protocols specifically chosen to ensure optimum efficiency and performance.
- Whether it's an indoor or outdoor unit, side-by-side or stacked, floor or roof mounted, we will ensure we design and manufacture exactly the right solution.
- All our units also fully comply with the latest ISO/BS/EN standards and ErP Eco-Design Directives.
- Built in accordance with ISO 9001:2015 quality and ISO 14001:2015 environmental standards.



# Incorporating the latest technology

# Total support services

## Cooling

Precise control of supply air temperature can be achieved in a number of ways including:-

- Chilled water configuration
- Direct Expansion configuration
- Adiabatic configuration

## Filtration

A wide range of high efficiency filtration solutions ensures precise environmental control. Solutions include:-

- Panel filters
- Bag filters
- Rigid filters
- Specialist application filters (HEPA, grease, carbon, etc)

## High Performance Fans

Our Wispair AHU's incorporate the latest fan technologies- to suit each individual application:

- Multiple fan wall
- Direct drive
- Belt drive

## Heat Recovery

Additional energy savings can be achieved with the incorporation of high efficiency heat recovery solutions including:-

- Crossflow plate heat exchangers
- Thermal Wheels
- Runaround systems
- Mixing box, 2 or 3 way

## Optional Integrated Control Systems

Each of our Wispair AHU's can incorporate the very latest in intelligent controls utilising sophisticated electronic microprocessors. This ensures all our solutions are optimised to deliver the most energy efficient, effective performance - 24/7.



## Comprehensive 24/7 service & maintenance support

We 'never' underestimate the importance of ensuring the solutions we provide operate effectively and efficiently 24 hours a day. That's why we have a totally dedicated 'service & maintenance' company.

Weatherite Service & Maintenance Ltd is a leader in the service and maintenance of HVAC solutions and all our dedicated engineers are fully trained and conversant in all aspects of Health & Safety and CDM regulations.

## Training & CPD Programmes

Working closely with our clients, we constantly develop dedicated training programmes aimed at providing basic knowledge and general information relevant to the safe working and inspection of our air handling systems. We are also more than happy for our clients and their teams to come and view the HVAC solutions being built in our state-of-the-art manufacturing facilities.

We also undertake regular CIBSE CPD accredited training programmes which help our clients and their engineering teams, understand more about the range of air movement solutions we manufacture and maintain.



At Weatherite Air Conditioning Ltd, we don't just design and manufacture innovative, energy saving, sustainable air handling solutions. We also provide a comprehensive range of support services ensuring all our clients receive the very best aftercare support, 24 hours a day - 365 days a year.

## Technical Support - at the end of the phone

Our technical experts are available on the phone and ready to take your call - should you have any concerns. And, with over 45 year's expertise and knowledge behind us, there isn't a lot we don't know about air handling. Just ring +44 (0) 121 665 2266.





# Weatherite

AIR CONDITIONING LIMITED



## Weatherite Air Conditioning Ltd

has established itself as one of the UK leaders in the manufacture of quality air conditioning and air handling equipment for all sectors of industry. By combining innovative product design with state-of-the-art manufacturing facilities, a total commitment to quality and customer service that's second to none, we aim to stay one of the UK's leaders.

Our success and continued growth is a direct result of our ability to respond to the individual needs of our customers and to the ever changing markets in which we operate.

## Contact Details

For further information please contact the sales team on: +44 (0)121 665 2266,  
email: [sales@weatheritegroup.com](mailto:sales@weatheritegroup.com)  
or visit our website: [www.weatheritegroup.com](http://www.weatheritegroup.com)

## Weatherite Air Conditioning Limited

Weatherite House, Credenda Road,  
West Bromwich, West Midlands,  
B70 7JE, England.

